

Your own piece of “hard to find” Paradise!



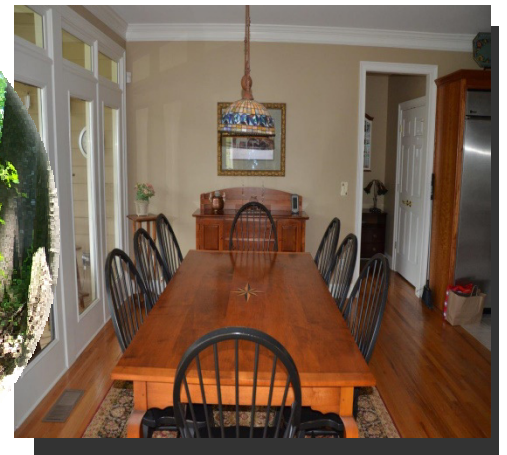
Milton Area – Cherokee County Taxes!

- Equestrian Neighborhood, only 8 homes, one street, quiet hidden enclave
- Ranch home with wonderful daylight Terrace level
- Four Bedroom, three bath - main home
- Studio apartment with full kitchen & bath over detached garage
- Master, plus one bedroom - main level
- Two bedrooms, with potential of a third - Terrace level
- Lower level bedrooms are master Suite size
- Terrace level includes bar, work out room, built-in media center
- Finished heated/cooled large bonus room over main garage
- Four stall barn, plus feed room, plus tack room, plus wash area
- Approx. 100x100 Arena with M10base, sand top, completely fenced
- Stalls all have no-chew metal fenced paddock access-approx. 20x20
- Easy conversion of one stall for foaling
- Additional Large two+ run in shed off of arena for no-grass turn outs
- 4.65+/- acres - fescue /Bermuda fields – Three separate pastures
- Must see to appreciate the wonderful starter or small horse farm
- Pristine Clean, newer roof, paint, upgraded top-of-the line granite cabinets – Move-in Ready!

\$840,000 – Seller’s Retiring – ready to go!

See Reverse side for Details / contact Information
Owners/Seller’s are Agents





Lisa Sylvia, Agent
770-401-8333
LisaSylvia3@Gmail.com

Presented Exclusively by:

PALMERHOUSE
PROPERTIES® 

FMLS#5692484

<http://www.propertypanorama.com/instaview-elite/fmls/5692484>

Owners are Agents

Information believe to be accurate, but not warranted